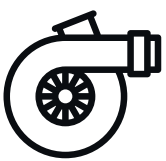


PROCESS OPTIMISATION WITH



LE-R AIR HEATERS



Generate an air flow

Powerful, tried-and-tested blowers generate the airflow required for the application.



Guide the air

Air ducting systems made of heat-resistant air hoses guide the airflow from the blower to the point of use.



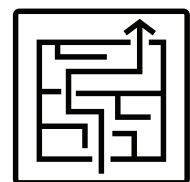
Heat the air

Electrically powered air heaters ensure the air is heated to the required temperature.



Regulate the temperature

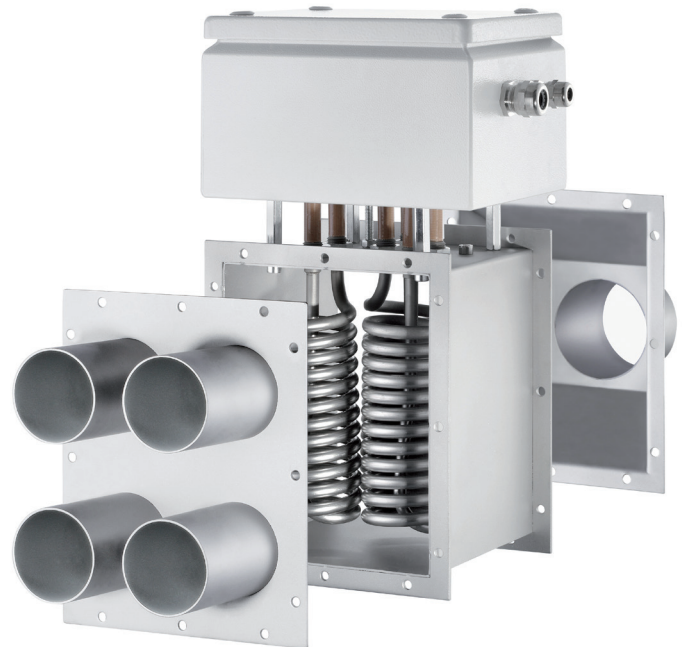
Microprocessor controlled regulators ensure precisely maintained temperatures when hot air is used.



Apply the hot air

At the point of use, the hot air is accurately fed through special nozzles for use in the respective application.

LE-R AIR HEATERS



The electrically powered air heaters of the LE-R series can be used universally, e.g. in drying systems, hot air shrink systems, heating cabinets, hot air ducts and preheating systems. The heating elements and housings are made of high-quality stainless steel, which is why they heat dry, moist and mildly aggressive air as well as nitrogen in fresh air or recirculating air operation. The equipment is easy to control and, with its compact dimensions, can be installed with only a small footprint. All versions are designed for continuous operation. The devices are available with an output of 3-18 kW, and special designs are possible. Inlet temperature in recirculating operation is max. 300 °C, outlet temperature is 350 °C. Customized layout pressure-resistant up to 5 bar (LE-D).

Base set

- Housing made of stainless steel (1.4301)
- Heating elements made of stainless steel (1.4301)
- Terminal boxes made of powder-coated sheet steel

Optional items:

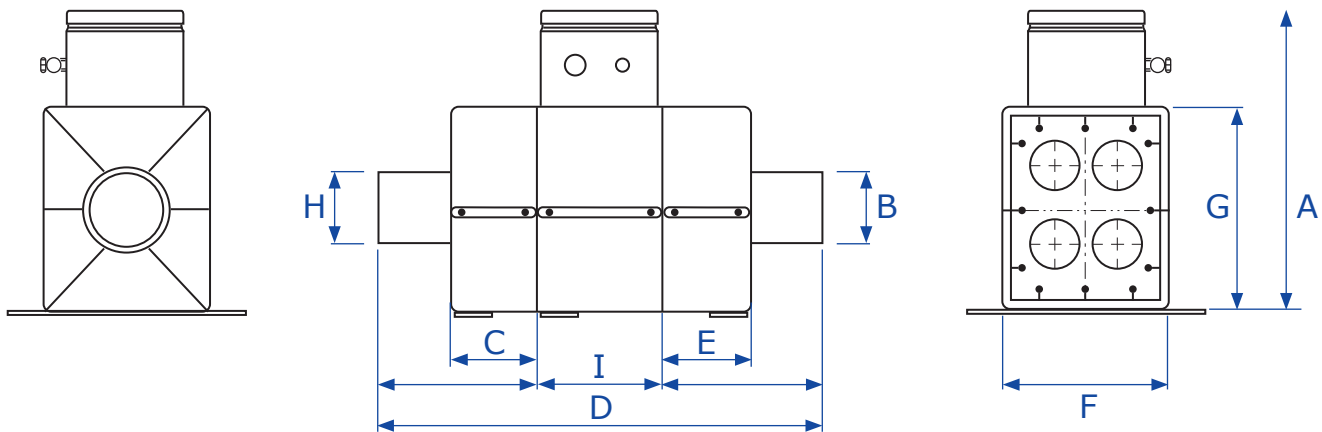
- Throttle valves
Order No. 400190601 [outlet side]
Order No. 400190605 [inlet side]
- Temperature sensor
Order No. 40019002, Order No. 40019004
- Mounting brackets Order No. 901100

Options

- Air volume throttle damper on inlet or outlet side
- Outlet flange plate is manufactured according to customer specifications
- Connecting flanges for inlet and outlet are manufactured according to customer specifications
- Mounting brackets
- Nozzles for hot air distribution, special systems on request
- DIN-compliant overtemperature protection relay has an adjustable cut-off temperature
- Temperature sensor Pt 100 C600 on outlet side
- Temperature sensor NiCr-Ni or similar on outlet side
- Air flow monitoring on inlet side by means of differential pressure switch, pressure-wave switch or air flow monitor
- Temperature regulated by means of electronic controllers
- Power electronics: solid-state relay complete with heat sinks



Installation dimensions



Designation (details in mm)	Dimensions	3 - 9 kW thermally insulated	10 - 18 kW thermally insulated
Total height	A	380	380
Diameter of inlet nozzle	B	150 max.	150 max.
Length of outlet nozzle, including funnel	C	200	200
Total length with inlet and outlet nozzles	D	564	728
Length of inlet nozzle, incl. funnel	E	200	200
Width of the housing	F	220	220
Height of the housing	G	260	260
Diameter of the outlet nozzle	H	150 max.	150 max.
LE-R body	I	164	328

Model	Order No.	Output kW	Voltage V	Description
LE-R 103	40018103	3,0	400	Thermally insulated, with overtemperature protection
LE-R 104	40018104	4,5	400	Thermally insulated, with overtemperature protection
LE-R 106	40018106	6,0	400	Thermally insulated, with overtemperature protection
LE-R 107	40018107	7,5	400	Thermally insulated, with overtemperature protection
LE-R 109	40018109	9,0	400	Thermally insulated, with overtemperature protection
LE-R 110	40018110	10,5	400	Thermally insulated, with overtemperature protection
LE-R 112	40018112	12,0	400	Thermally insulated, with overtemperature protection
LE-R 113	40018113	13,5	400	Thermally insulated, with overtemperature protection
LE-R 115	40018115	15,0	400	Thermally insulated, with overtemperature protection
LE-R 118	40018118	18,0	400	Thermally insulated, with overtemperature protection

Other sizes and capacities on request

PRICES LE-R AIR HEATERS

Air heater LE-R

With overtemperature protection, thermal insulated, without inlet- / outlet connector.

Model	Description	Order No.	Price
LE-R 103	400 V, 3,0 kW	40018103	2158,00
LE-R 104	400 V, 4,5 kW	40018104	2328,00
LE-R 106	400 V, 6,0 kW	40018106	2232,00
LE-R 107	400 V, 7,5 kW	40018107	2325,00
LE-R 109	400 V, 9,0 kW	40018109	2328,00
LE-R 110	400 V, 10,5 kW	40018110	2537,00
LE-R 112	400 V, 12,0 kW	40018112	2430,00
LE-R 113	400 V, 13,5 kW	40018113	2535,00
LE-R 115	400 V, 15,0 kW	40018115	2535,00
LE-R 118	400 V, 18,0 kW	40018118	2632,00

Inlet- and outlet connector LE-R

Model	Description	Order No.	Price
< 9 kW	Inlet connector, up to 100 mm, thermal insulated	4001811001	455,00
< 9 kW	Outlet connector, up to 100 mm, thermal insulated	4001811002	455,00
> 10 kW	Inlet connector, up to 100 mm, thermal insulated	4001811003	455,00
> 10 kW	Outlet connector, up to 100 mm, thermal insulated	4001811004	455,00
< 9 kW	Inlet connector, 101-150 mm, thermal insulated	4001811501	295,00
< 9 kW	Outlet connector, 101-150 mm, thermal insulated	4001811502	295,00
> 10 kW	Inlet connector, 101-150 mm, thermal insulated	4001811503	295,00
> 10 kW	Outlet connector, 101-150 mm, thermal insulated	4001811504	295,00

Accessories LE-R

Model	Description	Order No.	Price
NiCr-Ni	Installed temperature sensor Ø = 1,5 mm x 200 mm	40019002	88,00
Pt 100 C 600	Installed temperature sensor Ø = 6 mm x 125 mm	40019004	108,00
Throttle damper	Throttle damper at outlet connector	400190605	179,00
Throttle damper	Throttle damper at inlet connector	400190601	179,00
Bracket	Set mounting brackets for LE-R	901101	141,00



As of January 2024

Hereby all previous price lists lose their validity. Prices per piece in Euro, incl. packaging from stock Solingen, plus VAT payable within 30 days net. No liability for misprints.